

Water's Edge
12 acres of Palatial Living

VIBE





True legends never fade away.
THEY REINVENT.

True legends and path-breaking trends are timeless classics. Just like the Vibe at the Water's Edge! Go speechless by experiencing 23 timeless beauties, 12 storeyed with 2 apartments at every level, in the idyllic 12 acre-wide exquisite, palatial landscape at Water's Edge in Pimple Nilakh. With 3.5 BHK iconic apartments & penthouses, these are the ultimate epitomes of sophistication.

In fact the more you experience, the more you would explore Vibe. Every home in Vibe reflects the character and aesthetic excellence of Water's Edge.

Known for their spacious living rooms and well-balanced bedrooms, these apartments and penthouses come with a refreshing view of lush green amenity space. The main door opens to a vestibule that offers the apt touch of privacy and we have added a separate access to the servant's room attached with an additional toilet.

Don't just take our word for it, **come experience it for yourself!**



Water's Edge
12 acres of Palatial Living

VIBE

The Vibe at the Water's Edge. **REALLY GROOVY.**

The razor's edge of luxury, in the plush neighborhood of Pimple Nilakh, Aundh Annexe. An elite establishment of classy apartments and penthouses. Nestled amidst 12 acres of palatial living, in the very heart of Pune. Precisely the reason the gentry lives here.

The Vibe by Water's Edge is a melodious medley to an epic symphony. A rare, upscale brand of super-premium, opulent living in the configuration of lavish 3.5 BHK apartments & penthouses. Homes that transcend the confines of four walls by offering a truly happy vibe – a complete sensorial experience you will cherish for a lifetime. The vibes you experience here – super chic, ebullient, charismatic – will reflect your personality to the hilt.

Primed at a location hailed as one of the best investment avenues in Pimple Nilakh, Aundh Annexe. A verdant address naturally blessed with sunlight, breeze, and greenery to the fullest. Embellished with the inimitable touch of Italian sophistication, Vibe brings home the panache and attitude of Milan's runways and Rome's finesse & dictate. Prepare to embrace the fashionista in you!



The Vibe is exhilarating. **INSIDE OUT.**

The Vibe in the inside is just as good as on the outside. It follows you to every nook and corner.

Vibrant Vibes

- Beautifully decorated double height lobby
- Automated security systems for the entire residential complex
- Imported marble flooring in living, dining, kitchen & adjoining passages
- Granite kitchen platform with stainless steel sink
- Anodised aluminum windows
- Concealed electrification with modular switches
- POP finish for all walls and ceilings
- Modular kitchen with hob and chimney
- Piped LPG gas connection to each flat

Alluring Interiors

- Laminated MDF wooden flooring for all bedrooms and study
- Hot and cold mixer
- Jaquar or similar make CP fittings in all toilets / kitchen (except in servant's toilet)
- Bathtub with whirlpool in master toilet 1
- Storage water heater in all toilets
- Shower enclosure for master toilet 2

* Standard amenities options also available



AN EXQUISITE VIBE.

Is best enjoyed with a unique tribe.

Smart features like round-the-clock surveillance, generator backup. A professionally-managed gym and play courts where you can set your spirit soaring and your pulse racing. Just a few of the exclusive 'Vibe' privileges that you are entitled to.

Vivacious Vibes

- Health club with air conditioned multigym
- Squash court and tennis court
- Club house with outdoor party areas
- Cricket pitch for net practice
- Amphitheatre
- Infinity pool with separate children's pool
- Earthquake resistant design
- Artistically landscaped gardens
- Wide open spaces
- Internal well lit concrete/paved roads
- Anti-termite treatment for foundations
- CCTV with 24X7 recording backup
- Stretcher elevator
- Generator backup for lift and common area
- Dedicated covered parking for every flat
- Separate play areas for children



F WATER'S EDGE PHASE V

F WATER'S EDGE PHASE IV

G WATER'S EDGE PHASE VI

E1

E2

A

B

C

VIBE

BAZAR MART

SAGAR

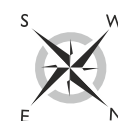




BUILDING - F (VIBE WING)

1ST FLOOR PLAN

FLAT NO.	CARPET AREA IN Sq.m.	CARPET AREA IN Sq.ft.	ENCL. BALCONY AREA IN Sq.m.	ENCL. BALCONY AREA IN Sq.ft.	OPEN BALCONY AREA IN Sq.m.	OPEN BALCONY AREA IN Sq.ft.	ATTCHED OPEN TERR. AREA IN Sq.m.	ATTCHED OPEN TERR. AREA IN Sq.ft.	ATTCHED TERRACE AREA IN Sq.m.	ATTCHED TERRACE AREA IN Sq.ft.
101	164.28	1768	21.43	231	—	—	90.13	970	—	—
102	164.28	1768	21.43	231	—	—	76.33	822	—	—



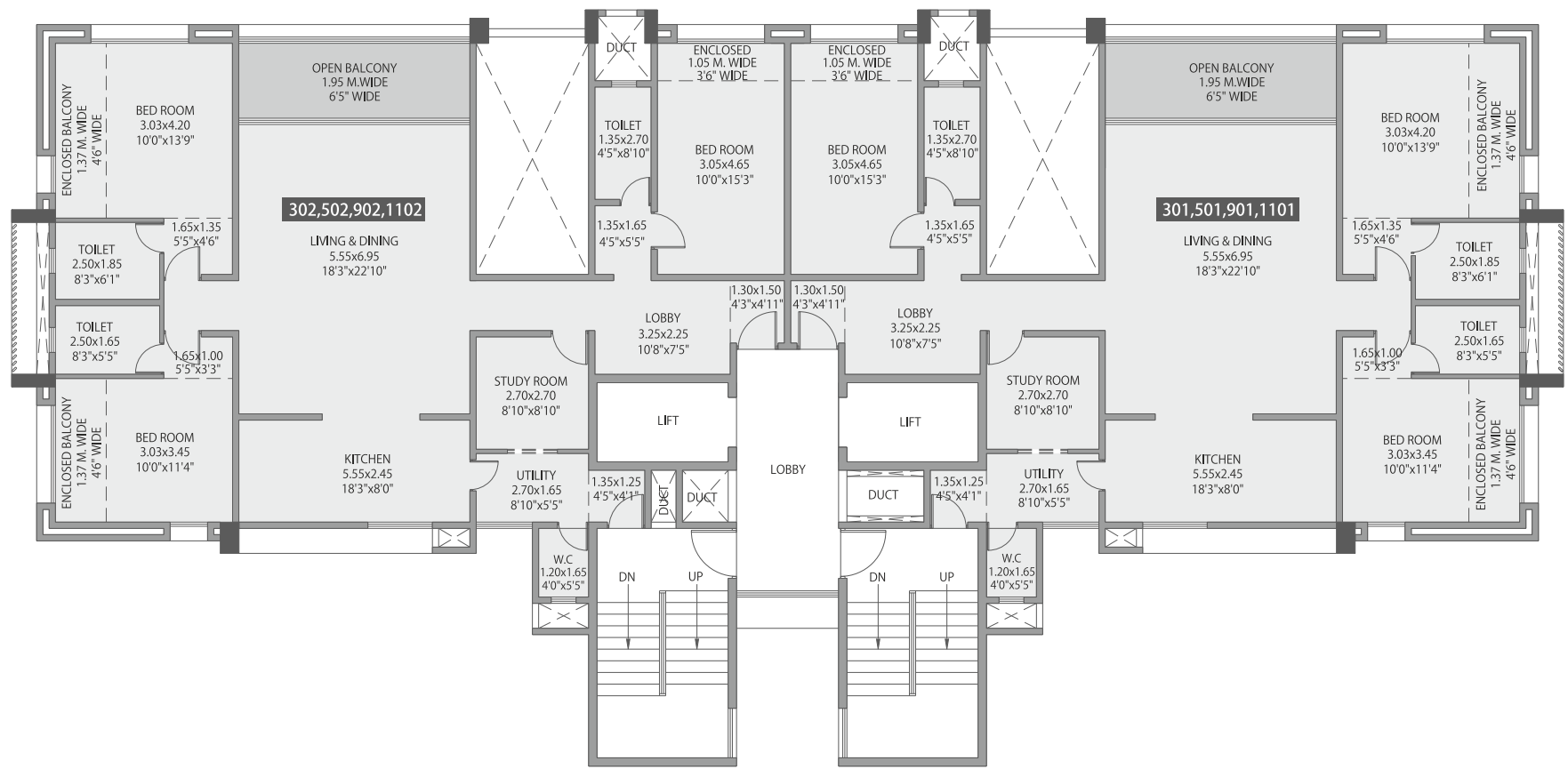


BUILDING - F (VIBE WING)

2ND, 4TH, 6TH, 8TH & 10TH FLOOR PLAN

FLAT NO.	CARPET AREA IN Sq.m.	CARPET AREA IN Sq.ft.	ENCL. BALCONY AREA IN Sq.m.	ENCL. BALCONY AREA IN Sq.ft.	OPEN BALCONY AREA IN Sq.m.	OPEN BALCONY AREA IN Sq.ft.	ATTCHED OPEN TERR. AREA IN Sq.m.	ATTCHED OPEN TERR. AREA IN Sq.ft.	ATTCHED TERRACE AREA IN Sq.m.	ATTCHED TERRACE AREA IN Sq.ft.
201,202,401,402,601,602,801,802,1001,1002	149.02	1604	19.73	212	—	—	—	—	14.98	161



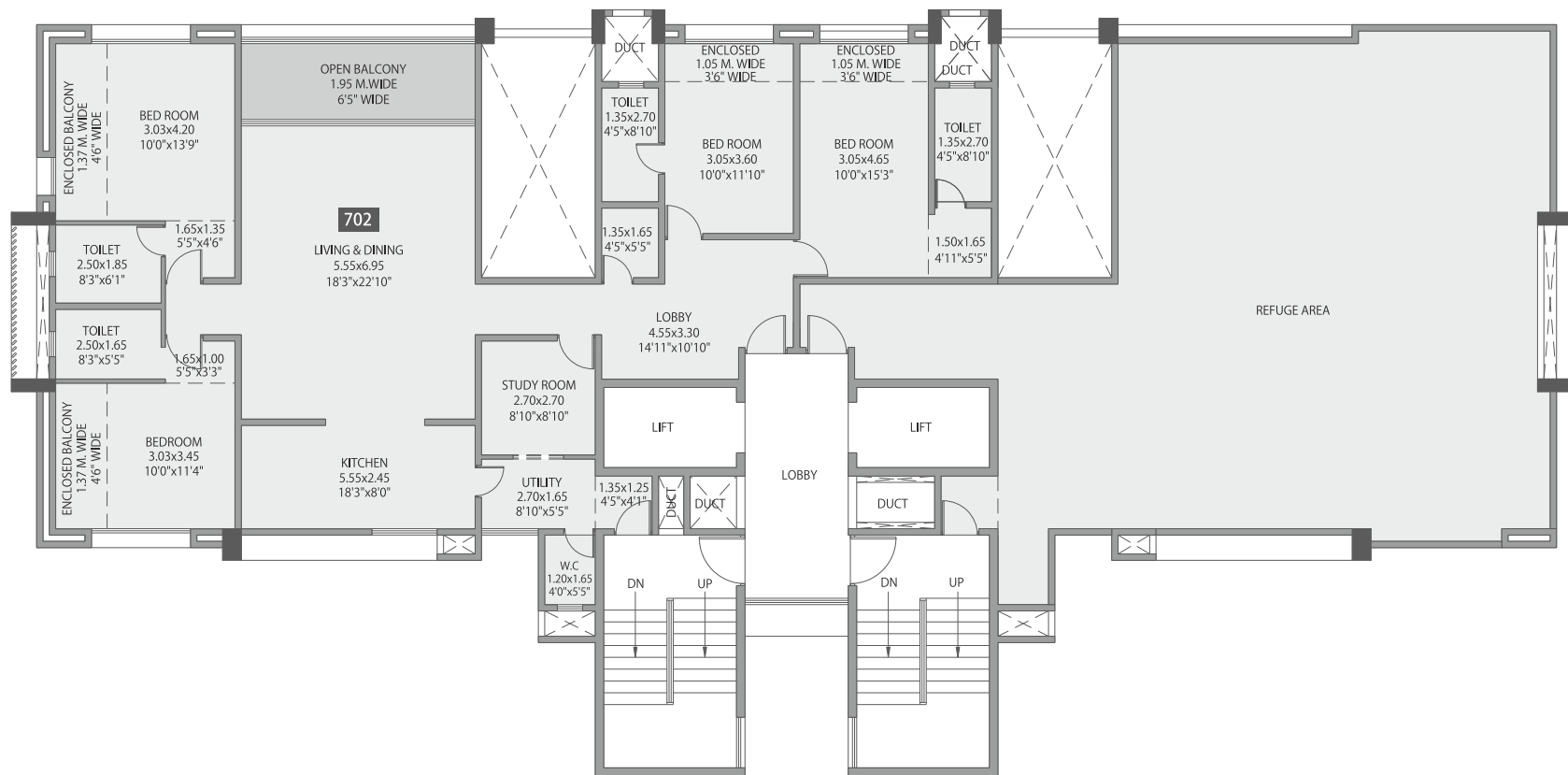


BUILDING - F (VIBE WING)

3RD, 5TH, 9TH & 11TH FLOOR PLAN

FLAT NO.	CARPET AREA IN Sq.m.	CARPET AREA IN Sq.ft.	ENCL. BALCONY AREA IN Sq.m.	ENCL. BALCONY AREA IN Sq.ft.	OPEN BALCONY AREA IN Sq.m.	OPEN BALCONY AREA IN Sq.ft.	ATTCHED OPEN TERR. AREA IN Sq.m.	ATTCHED OPEN TERR. AREA IN Sq.ft.	ATTCHED TERRACE AREA IN Sq.m.	ATTCHED TERRACE AREA IN Sq.ft.
301,302,501,502, 901,902,1101,1102	145.57	1567	12.07	130	9.99	108	—	—	—	—



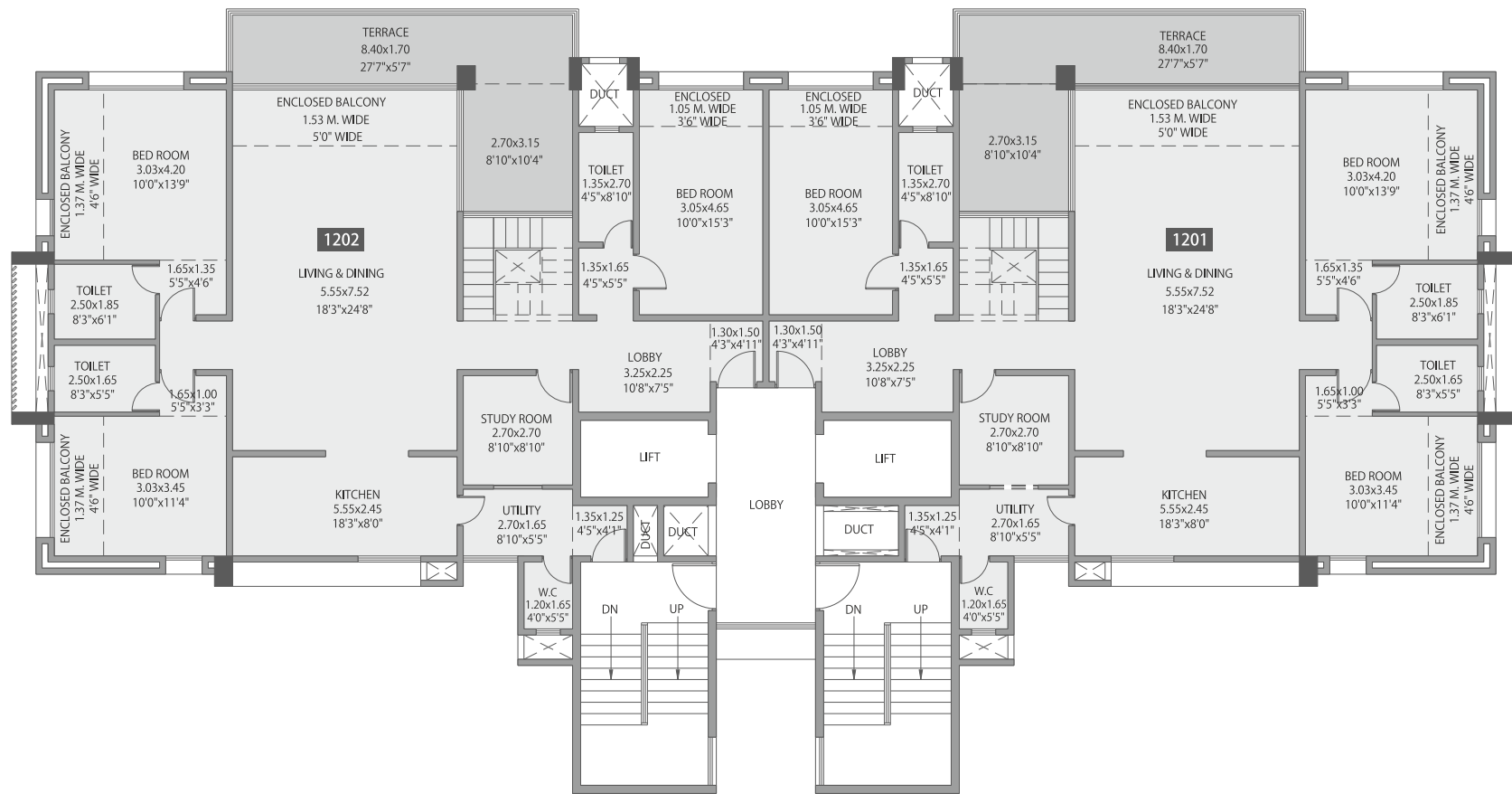


BUILDING - F (VIBE WING)

7TH FLOOR PLAN

FLAT NO.	CARPET AREA IN Sq.m.	CARPET AREA IN Sq.ft.	ENCL. BALCONY AREA IN Sq.m.	ENCL. BALCONY AREA IN Sq.ft.	OPEN BALCONY AREA IN Sq.m.	OPEN BALCONY AREA IN Sq.ft.	ATTCHED OPEN TERR. AREA IN Sq.m.	ATTCHED OPEN TERR. AREA IN Sq.ft.	ATTCHED TERRACE AREA IN Sq.m.	ATTCHED TERRACE AREA IN Sq.ft.
702	167.20	1800	14.82	160	9.99	108	—	—	—	—



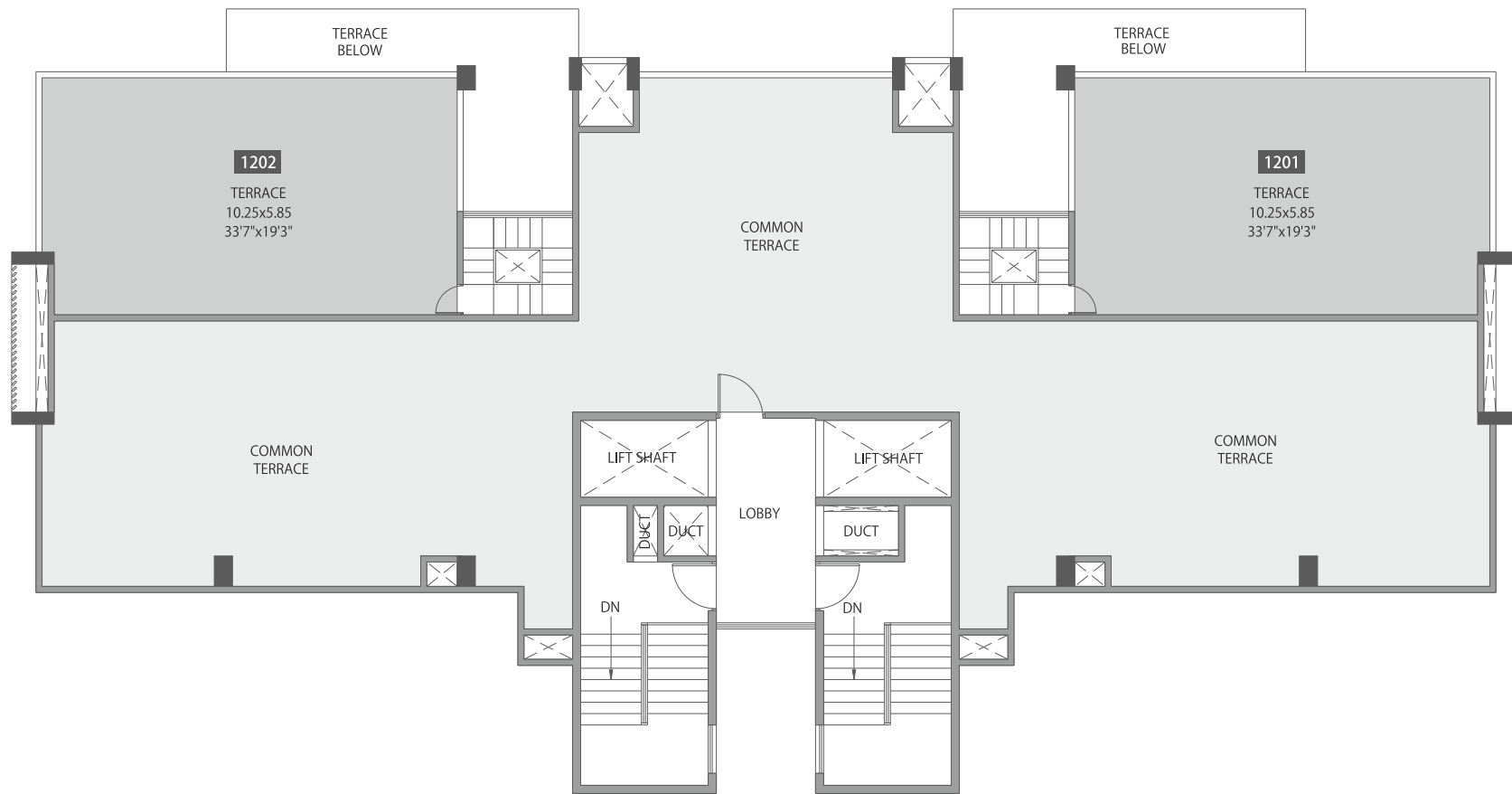


BUILDING - F (VIBE WING)

12TH FLOOR PLAN

FLAT NO.	CARPET AREA IN Sq.m.	CARPET AREA IN Sq.ft.	ENCL. BALCONY AREA IN Sq.m.	ENCL. BALCONY AREA IN Sq.ft.	OPEN BALCONY AREA IN Sq.m.	OPEN BALCONY AREA IN Sq.ft.	ATTCHED OPEN TERR. AREA IN Sq.m.	ATTCHED OPEN TERR. AREA IN Sq.ft.	ATTCHED TERRACE AREA IN Sq.m.	ATTCHED TERRACE AREA IN Sq.ft.
1201,1202	156.67	1686	19.73	212	—	—	—	—	22.78	245



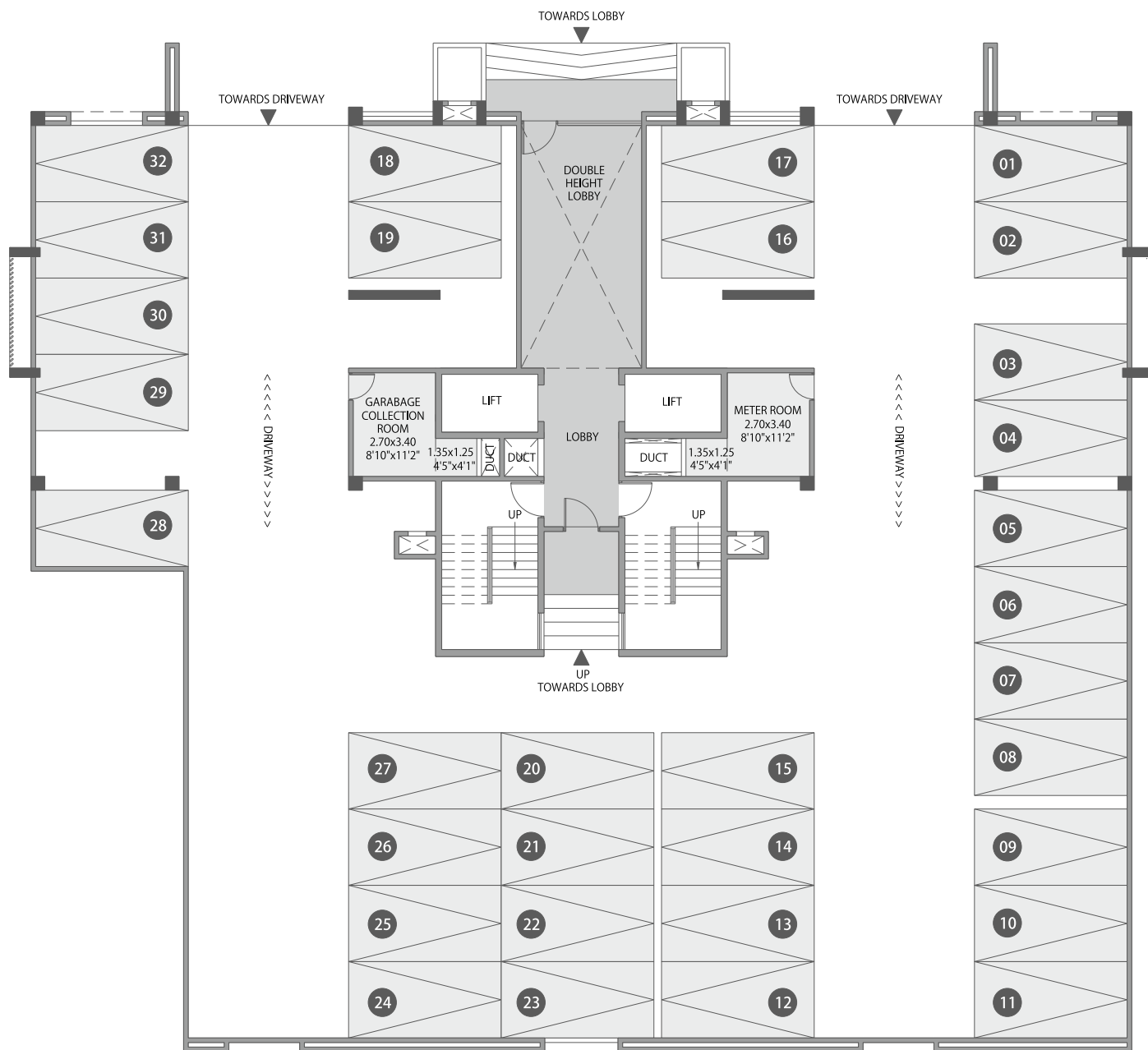


BUILDING - F (VIBE WING)

TERRACE FLOOR PLAN

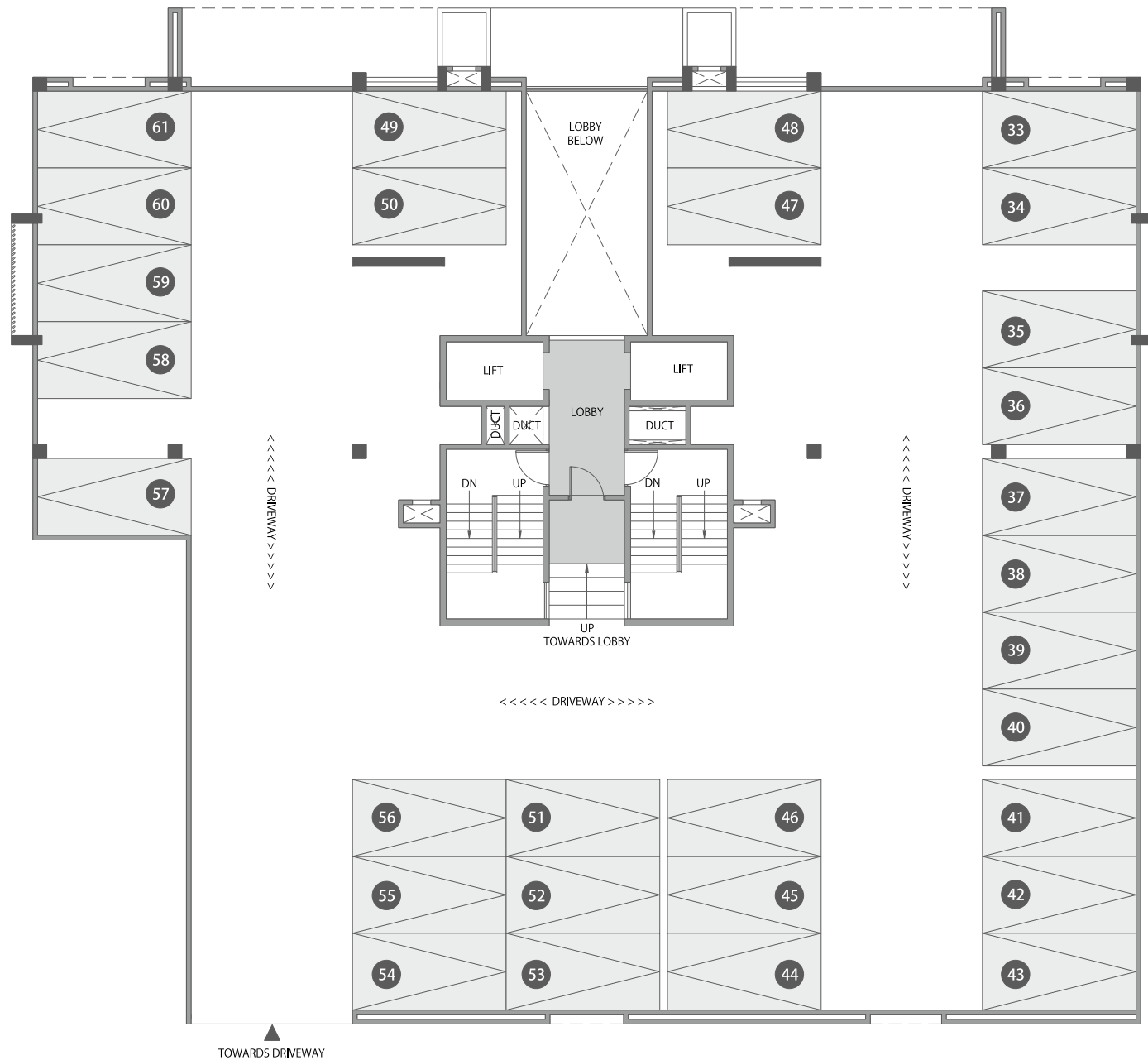
FLAT NO.	CARPET AREA IN Sq.m.	CARPET AREA IN Sq.ft.	ENCL. BALCONY AREA IN Sq.m.	ENCL. BALCONY AREA IN Sq.ft.	OPEN BALCONY AREA IN Sq.m.	OPEN BALCONY AREA IN Sq.ft.	ATTCHED OPEN TERR. AREA IN Sq.m.	ATTCHED OPEN TERR. AREA IN Sq.ft.	ATTCHED TERRACE AREA IN Sq.m.	ATTCHED TERRACE AREA IN Sq.ft.
1201,1202	—	—	—	—	—	—	59.49	640	—	—





BUILDING - F (VIBE WING)
 LOWER LEVEL PARKING





BUILDING - F (VIBE WING)

UPPER LEVEL PARKING





SAGAR™

PROPERTIES
BY KANUBHAI SAGAR

Sagar Properties is a renowned name in the real estate arena, known for its benchmark creations in the Mumbai and Pune cityscapes. The premium 3, 3.5, 4, 4.5 BHK apartments & penthouses of Sagar Properties – their hallmark creations – are so innovative that they are no longer just spaces defined by four walls, but have conjured into dreams, enlivened by discerning home-seekers like you.

Sagar Properties' abodes reflect the emotions, aspirations and dreams that appeal to the mind and nurture the soul. Superbly conceptualized flats situated in thriving, opportune locations such as Pimple Nilakh, Aundh Annexe - the futuristic frontiers of a cosmopolitan Pune. Elegance and unique design styling are our fortes, attracting NRIs back to our land.

Sagar Properties, through a perfect mélange of grace and grandeur that enthrall and spellbind, are known for crafting not just homes, but blissful, awe-inspiring and fulfilling experiences – everlasting memories that linger for a lifetime!

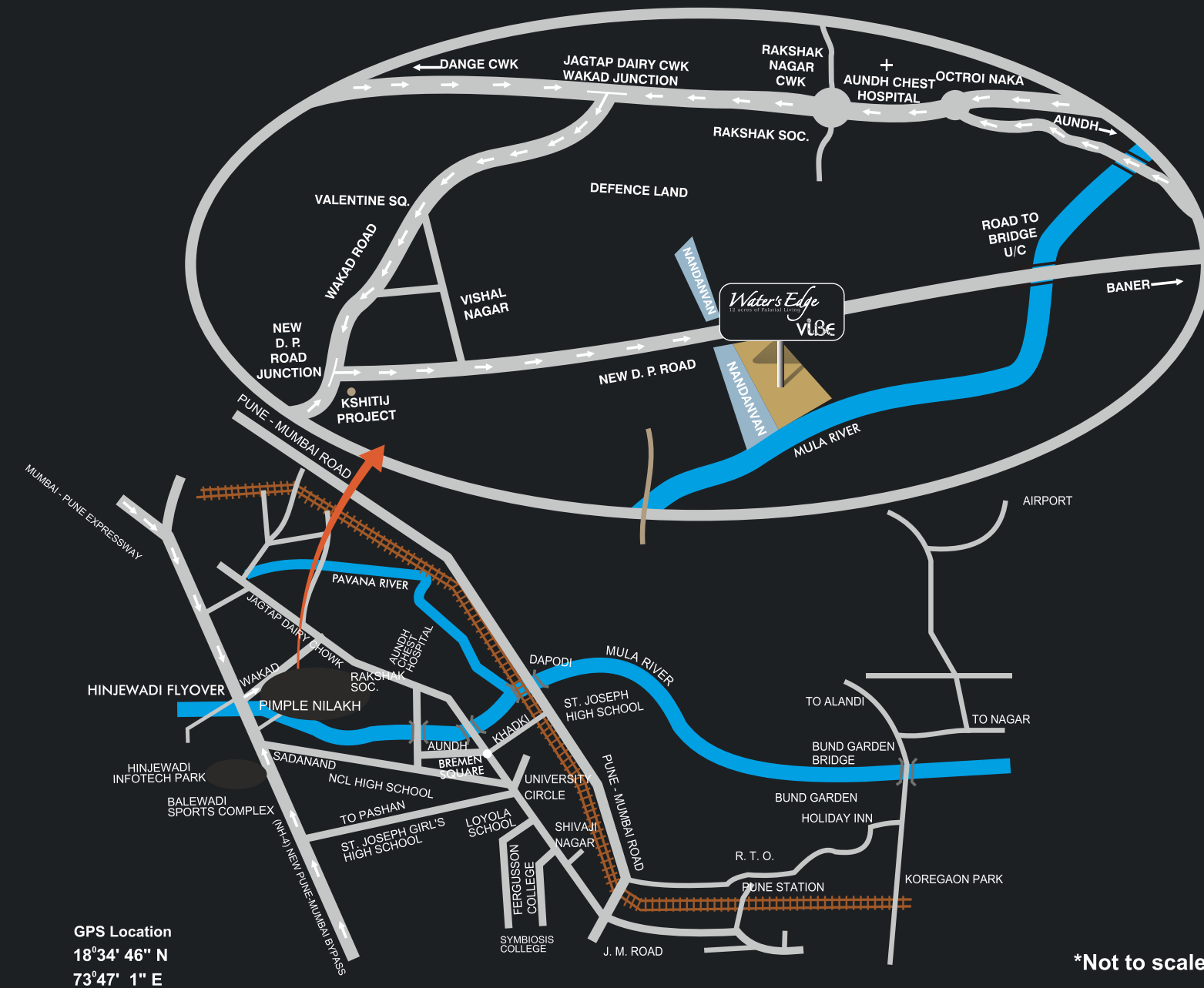
SAGAR PROPERTIES is a official trademark of Shree Sagar Estates Pvt. Ltd.
Mssr. Om Sagar Developers is a licensed user of this trademark.

Completed projects in Mumbai:

- Om Sagar • Amrut Sagar • Sagar Darshan • Nirmal Sagar • Amrapali • Seeta Park



Location Map



YOUR VIBE...

Attracts plenty more than your tribe.

When you live in one of Pune's most sought after, envy-inspiring neighborhoods, you're bound to be in the limelight all the time. Be it the ultra modern ways of life or the soulful solitude of natural wilderness, the Vibe here has plenty to go around, and then some more!

Situated at close proximity to the Hinjewadi IT Park and a convenient driving distance from the various industrial areas like Talegaon, Chakan, Talawade and Pimpri - Chinchwad, the Vibe is more than a resounding style statement; it has come to be known as a landmark. With enhanced accessibility to the Mumbai - Pune Expressway and the Mumbai international airport within a three hours' striking distance, the high-flying celebrity circuit is never really out of your reach.

CREDITS

Architects:

Vikas Bhandari & Associates

Landscape Architects:

Ravi & Varsha Gavandi

Structural Consultants:

Ellora Structural Consultants

Legal Advisors:

**Vivek Kanatawala & Co., Advocates and Solicitors, Kiran Kothadia,
Pankaj Dedhia Advocates**

SAGARTM
P R O P E R T I E S
BY KANUBHAI SAGAR

OM SAGAR DEVELOPERS

Site: S. No. 18/1/1, Next to Nandanvan, Jagtap Dairy Chowk,

Pimple Nilakh, Aundh Annexe, Pune - 411027.

Tel.: +91-937 230 6060 | +91-937 000 2929

E-mail: sales@sagarproperties.com

Website: www.sagarproperties.com



MAHARERA REGISTRATION NO.:

WATER'S EDGE PHASE V - P52100002038

WATER'S EDGE PHASE IV - P52100001678

WATER'S EDGE PHASE VI - P52100001427

Available at website <http://www.maharera.mahaonline.gov.in>



DISCLAIMER:

This brochure is purely conceptual and not a legal offering. The company reserves the right to add, delete or alter any details and any specifications and floor plans in its endeavor to make improvements as and when required. The images, layout and maps in this brochure are for indicative purpose only.